



A Gateway to the Future

The Anaheim Regional Transportation Intermodal Center



Anaheim City Council to Hold ARTIC Public Hearing September 28

Where:

Anaheim City Hall Council Chambers
200 S. Anaheim Blvd.
Anaheim, CA 92805

Public parking available



When:

Tuesday September 28, 2010;
5:30 p.m.

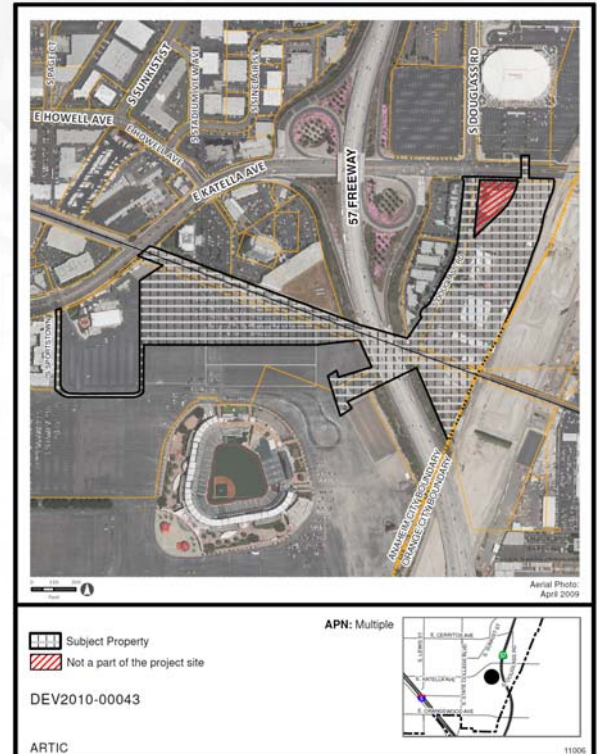
City Council Public Hearing Set for the ARTIC Project

On September 13, 2010 the City of Anaheim Planning Commission approved resolutions recommending City Council certification of the Anaheim Regional Transportation Intermodal Center (ARTIC) Environmental Impact Report and City Council approval of a related General Plan amendment reclassifying Douglass Road, south of Katella Avenue from a local Street to a secondary arterial.

The Anaheim City Council will hold a public hearing on Tuesday, September 28, 2010 at 5:30 p.m. to consider the ARTIC Environmental Impact Report and related General Plan amendment. Members of the public are invited to attend and give testimony.

The ARTIC Environmental Impact Report has been prepared to analyze the construction and operation of ARTIC, which is proposed as a state-of-the-art transportation facility that will serve as an intermodal transportation hub for Orange County and the entire Southern California region. ARTIC is centrally located for transit services including Amtrak, Metrolink, OCTA bus, and future California High-Speed Rail, and California-Nevada Super Speed Train.

The majority of the 19-acre project area studied by the ARTIC Environmental Impact Report is located south of Katella Avenue, east of Douglass Road, north of State Route 57 (SR-57) and west of the Anaheim City Limits. The remaining project area generally includes adjacent street and railroad rights-of-way and the existing Anaheim Amtrak/Metrolink station, located west of SR-57.



The ARTIC Environmental Impact Report is available at www.anaheim.net/planning (click on the link to "current environmental documents" in the lower right-hand corner) or www.articinfo.com.

Questions regarding the project may be addressed by calling the project helpline at 1(877) 99-ARTIC [1 (877) 992-7842] or e-mailing to info@articinfo.com.



For more information visit: www.articinfo.com